

XCR55L5_E越野轮胎起重机 / Rough Terrain Crane

产品简介

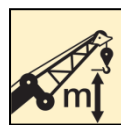
Brief introduction



55 t



43.6 m



57.1m



XCR55L5_E

**XCR55L5_E广泛应用于油田建设、矿山施工、建筑施工、
路桥建设、工矿企业等作业场所。**

**XCR55L5_E is widely used for lifting operations in oilfields,
mines, road and bridge construction, etc.**



XCR55L5_E徐工G一代越野轮胎起重机

四大创新技术平台，打造超高性能、绿色节能、高效智能的吊重新利器

XCMG G1 generation rough terrain crane XCR55L5_E is designed with four innovative technologies integrated to create an ultra high performance, green and energy saving, efficient and intelligent lifting equipment.



XCR55L5_E

超高性能

High performance

- 五节43.6m行业最长主臂，加装副臂后最大臂长可达59.6m，臂长和起重性能行业领先。
- 5-section boom of 43.6 m is the longest in the industry, the length of boom and jib can reach 59.6 m after jib is installed. Boom length and lifting capacity take the lead in the industry.
- 大排量双变量柱塞泵匹配徐工专利技术的合流阀，起重作业效率提升13%，作业效率行业领先。
- Large displacement dual-variable plunger pump with confluent main valve adopting XCMG patented technology integrated, leads to improvement by 13% in operation efficiency, which takes the lead in the industry.
- 大功率发动机+低速大扭矩的液力变矩传动系统，加速性能提升10%，最高车速25km/h，最大爬坡能力86%，最小转弯半径仅6m，行业最小，机动灵活，转场快捷。
- Large power engine + low speed large torque transmission system with hydraulic torque converter; acceleration performance is improved by 10%, the max. travel speed is 25 km/h and the max. grade ability is 86%; the min. turning radius is only 6 m, the smallest in the industry, contributing to excellent maneuver ability and quick job site transfer.

绿色节能

Green and energy-saving

- 双变量泵阀控负载敏感的新型节能液压系统，不同工况油耗，降低10%~15%。
- New energy-saving hydraulic system with double-variable pump combined with a valve-controlled load-sensing system. The fuel consumption under different working conditions can be reduced by 10%~15%.
- ECO节能控制，不同工况油耗降低5%-9%。
- ECO energy-saving control, fuel consumption under different working conditions can be reduced by 5%-9%.
- 具有闭锁功能的变矩器，低速大扭矩、高速高效率，行驶油耗降低20%。
- Torque converter with lockup function, low speed large torque, high speed and high efficiency, and driving fuel consumption is reduced by 20%.

科技智能

Science and technology intelligence

- 专有的行车安全主动保护技术，针对不同故障类型，分类分级管理，主动报警、限档限速、自动制动，大幅提升车辆行驶的主动安全性。
- Dedicated driving safety active protection technology is adopted to realize classified management, such as automatic warning, gear and speed limit, automatic brake according to different fault categories, in order to improve the active safety of the driving vehicle.
- 智能臂架，规范用户使用，提升产品使用安全，为用户提供最有效的吊装方案，提高作业效率。
- Intelligent boom system can standardize the operation of the users and improve the operation safety; it provides users with the most effective lifting plan, and improves the working efficiency.
- 故障自诊断，285个控制节点，自动检测、自动诊断，并在显示器上实时显示，故障诊断率达到76%。
- Fault self-diagnosis system is adopted; there are 285 control nodes; automatic inspection and automatic diagnosis can be shown in real-time on the display. The fault diagnosis rate can reach 76%.

品质效能

Quality performance

- 复合节流+负载滤波的双泵阀控负载敏感系统，控制精准、微动平顺。
- Compound throttling+ double-pump valve control load-sensing system with load filter; accurate control and smooth inching control.
- 集作业工况自动规划、故障自诊断等功能于一体的徐工人机交互系统，信息丰富、界面友好、操作按键功能分区合理，竭力为您提供舒适的智能、安全的操纵体验。
- XCMG man-machine interactive system with functions such as automatic planning of working conditions, fault self-diagnosis, etc. integrated, provides abundant information, user-friendly interface and reasonable layout of function keys, as well as comfortable, intelligent and safe operating experience.
- 独创的转角自调整多模式转向，各模式均由方向盘直接控制，任何状态下均可进行转向模式切换，后轮转角自动调整，控制精准、操作方便。
- Creative self adjustment of turning angle, multi-mode steering technology, all steering modes can be directly controlled by steering wheel; steering modes can be switched in any situation, and the turning angle of rear wheels may self-adjust while switching steering mode, which is easy to operate with more precise control
- 专业的外观造型和人机工程模拟分析，实现了功能性与美观性的完美结合。
- Professionally designed appearance and man-machine engineering simulation analysis enable a perfect combination of function and art.



起重性能强、作业范围广

Superb lifting performance

- 5节主臂，长43.6m。
- 5-section boom of 43.6m.
- 2节副臂，长9.2m-16m，安装角度0°、15°、30°。
- Two jib sections of 9.2m-16m, with 0°, 15° and 30° jib offset angles.
- 三种臂架伸缩模式，作业范围广、工况适应性强。
- Three boom telescoping modes, wider working radius and better application adaptability.



回转机构

Slewing mechanism

- 行星齿轮减速器、常闭式制动器。
- Planetary gear reducer, normally closed brake.
- 360°连续回转。
- Continuous 360° slewing.
- 回转速度为0-2r/min。
- Slewing speed 0-2 r/min.

起升机构

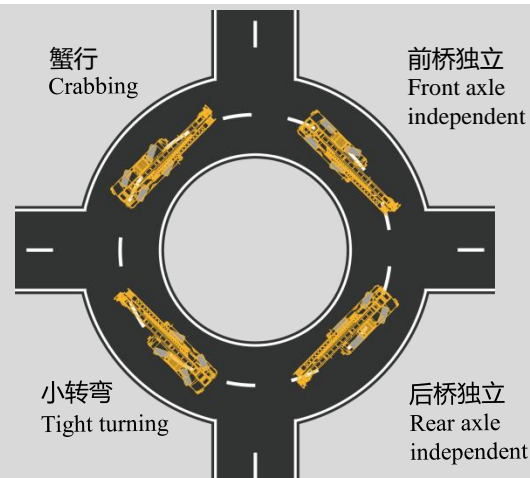
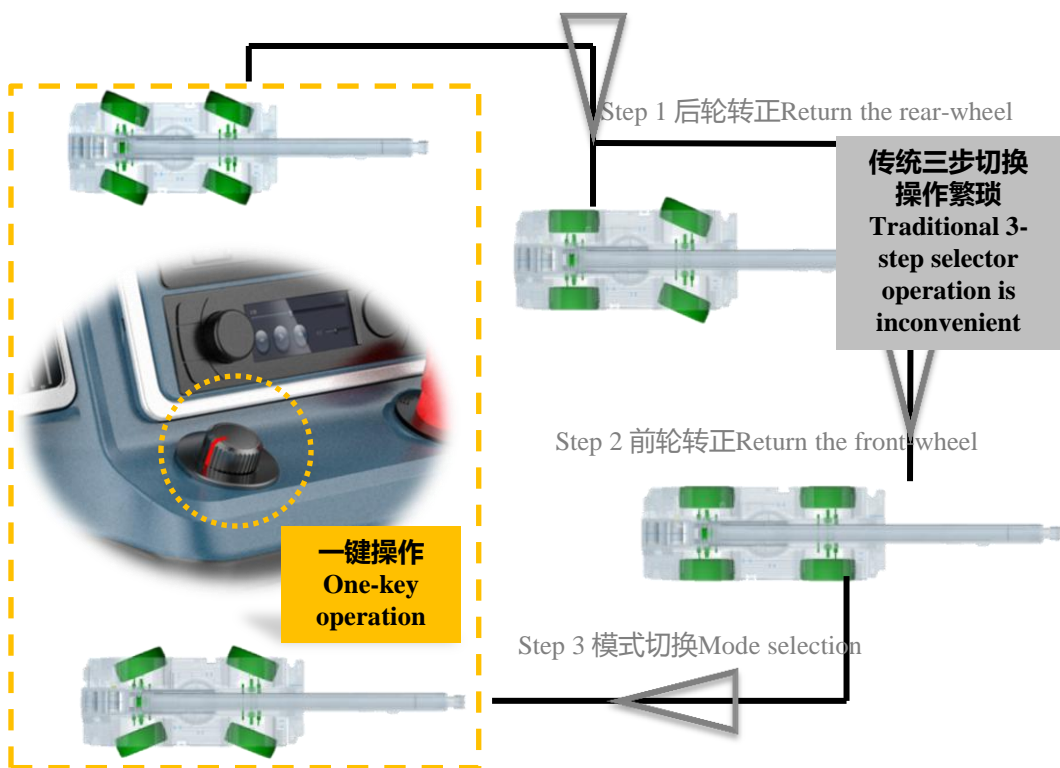
Winch system

- 行星齿轮减速器、常闭式制动器。
- Planetary gear reducer, constant closed brake.
- 最大单绳拉力为51KN。
- Max. single line pull is 51 KN.
- 最大起升速度（主卷、单绳，空载第四层）150m/min。
- Max. hoisting speed (single line, no load, 4th layer) is 150 m/min.

变幅机构

Elevating mechanism

- 单变幅油缸，采用重力+动力下降模式。
- Single elevating cylinder, gravity fall plus power lowering boom mode.
- 带自补偿功能的平衡阀，更安全。
- Safer balance valve with self-compensating function.



机动灵活、转场快捷

Flexible maneuverability and quick job site transfer

- 2种驱动方式、4种转向模式，正反向行驶功能，行业最小的转弯半径，机动灵活。
- Two driving types, 4 steering modes, forwards and backwards driving function available, smallest turning radius in the industry, mobile and flexible.
- 大功率发动机（美国康明斯）+低速大扭矩的液力变矩传动系统，最大输出扭矩 1650N.m，加速性能提升10%，高速高效率，六个前进档、三个后退档，转移快捷。
- Large power engine (U.S Cummins)+hydraulic transmission system with low speed and large torque. The max. output torque is 1650N.m, the acceleration performance is improved by 10%, with high speed and high efficiency; 6 forward gears and 3 reverse gears are available with quick transfer.
- 全轮驱动系统+专用越野花纹轮胎，各种场地畅行无阻
- All-wheel drive system, unimpeded travel on different road conditions.



三大节能措施，使用成本更低

Three major energy-saving measures lead to lower cost

- 双变量泵阀控负载敏感的新型节能液压系统，同时利用重力辅助进行变幅下落，不同工况油耗，降低10%~15%。
- New energy-saving hydraulic system with double-variable pump valve control load-sensing system; elevating down with gravity is available; the fuel consumption under different working conditions can be reduced by 10%~15%.





同等工况下起重作业
节省燃油

During lifting
operation, fuel can be
saved under the same
working conditions

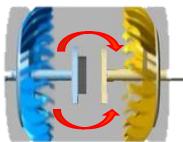
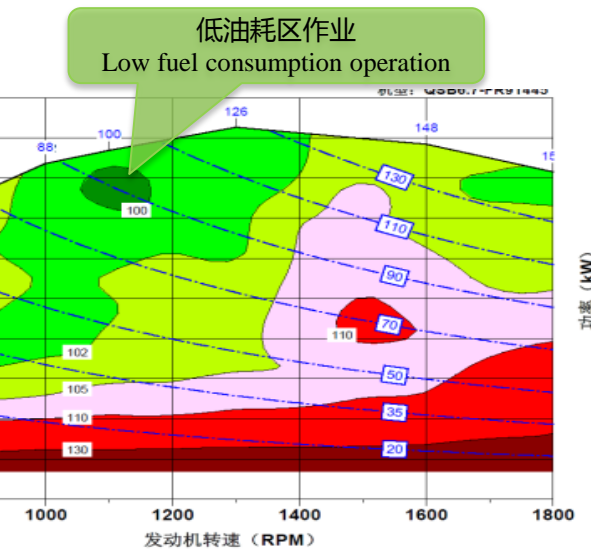
5%~
9%



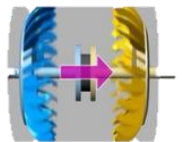
行驶油耗降低

Driving fuel consumption is reduced by

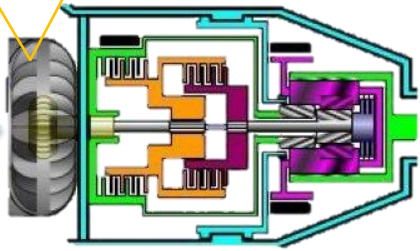
20%



液力传动
Hydraulic drive



机械传动
Mechanic drive



- ECO节能控制，不同工况油耗降低5%-9%。
- ECO energy-saving control, fuel consumption under different working conditions can be reduced by 5%-9%.
- 具有闭锁功能的变矩器，低速大扭矩、高速高效率，行驶油耗降低20%。
- Torque converter with lockup function, low speed large torque, high speed and high efficiency, and driving fuel consumption is reduced by 20%.

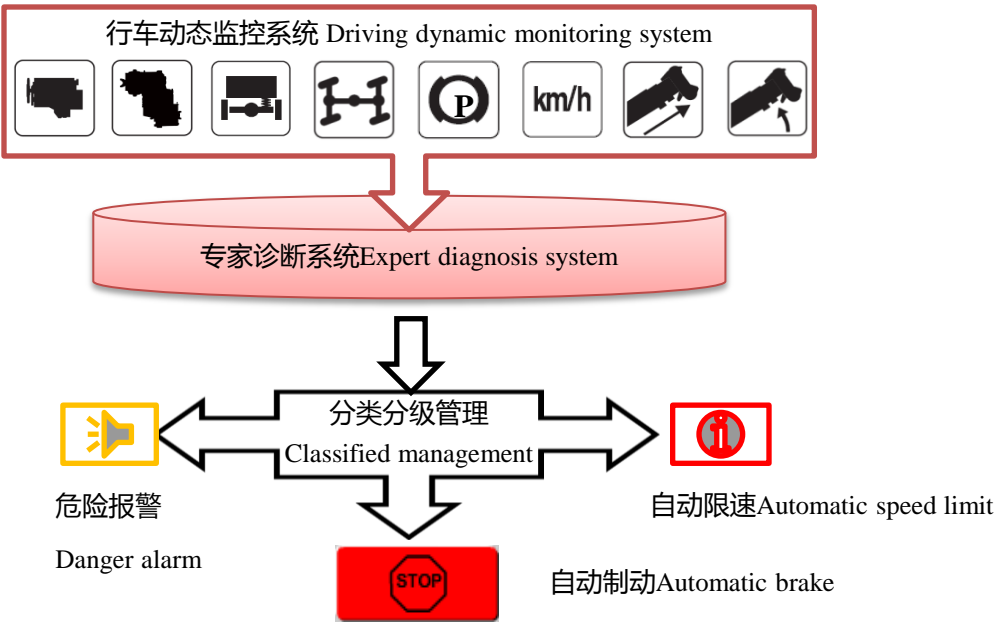




作业安全主动防护

Active protection for operation safety

- 超载自动停止、声光报警，强制自动限速，海关联盟机型加装高压电保护、虚拟墙、低温保护。
- Automatic stop for overload, audio and visual alarm, forced automatically limiting speed; CU-TR models are equipped with high voltage protection, virtual wall and low temperature protection.
- 借鉴欧洲、北美、海关联盟、中国等区域设计标准。
- It is designed referring to the safety standards for certification of Europe, North America, CU-TR and China.



行车安全主动保护系统 Driving safety active protection system

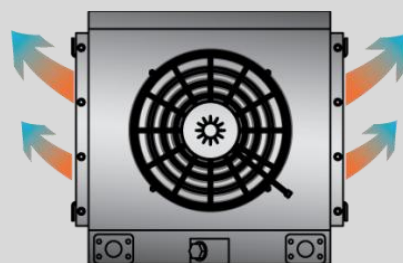
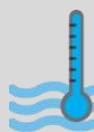
- 专有的行车安全主动保护技术，针对不同故障类型，分类分级管理，主动报警、限档限速、自动制动，大幅提升车辆行驶的主动安全性。
- Dedicated driving safety active protection technology is adopted to realize classified management, such as automatic warning, gear and speed limit, automatic brake according to different fault categories, in order to improve the active safety of the driving vehicle.



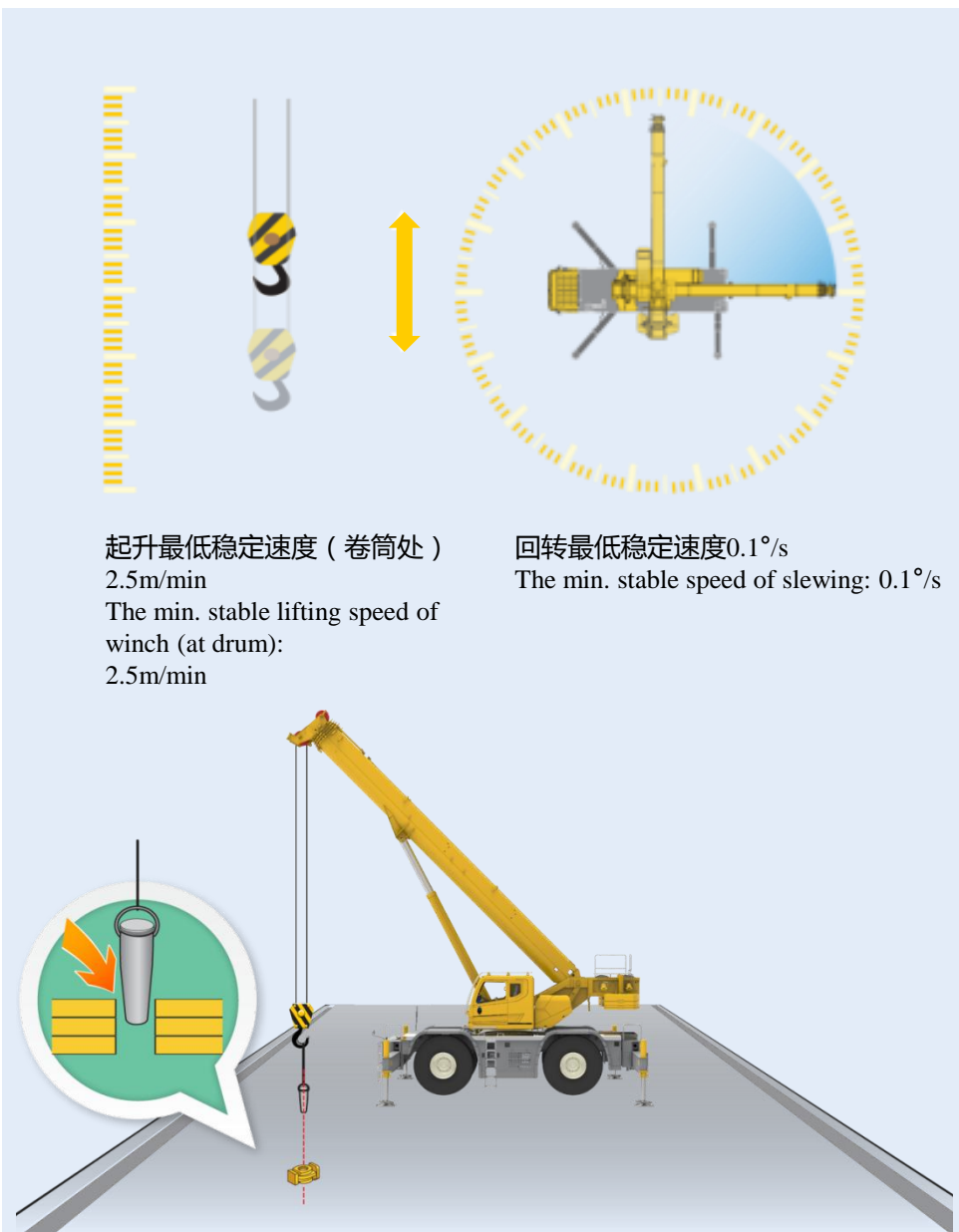
双泵阀控负载敏感系统

Double-pump valve control load-sensing system

- 专有双泵分/合流控制技术，单个动作双泵合流，作业速度快；复合动作，子系统独立供油，互不干扰，动作精准可控、作业高效。
- Dedicated double-pump confluence control technology is available; double-pump confluence for single movement with quick operation; subsystem independent oil supply for combined movements; the movements are accurate and controllable with high operation efficiency.
- 自动温控大功率液压油散热器，高低温环境均可持续作业。
- Large power hydraulic radiator with automatic temperature control are available; continuous operation can be realized under high and low temperature.

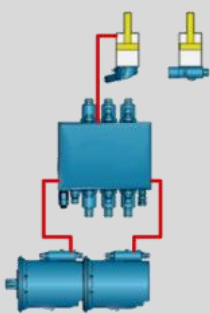


液压系统热平衡温度80℃以下
The thermal equilibrium temperature of hydraulic system is controlled below 80 °C

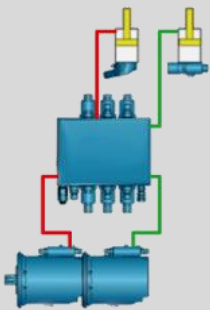


起升最低稳定速度 (卷筒处)
2.5m/min
The min. stable lifting speed of
winch (at drum):
2.5m/min

回转最低稳定速度0.1°/s
The min. stable speed of slewing: 0.1°/s



双泵合流驱动
Double-pump
confluence drive



双泵独立驱动
Double-pump
independent drive

- 复合节流+负载滤波的双泵阀控负载敏感系统，控制精准、微动性良好，精准平稳吊装。
- Compound throttling+ double-pump valve control load-sensing system with load filter; accurate control, good inching control, precise and stable lifting.





信息输入
Input information



工况查询
Search working conditions



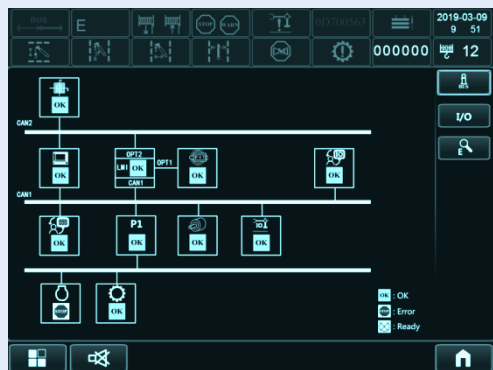
查询结果
Search results

工况自动查询 Automatic searching of working conditions

- 只需输入起重量、起吊幅度、起吊高度，即可自动推荐最优作业工况，查询快捷、方便，降低人为误操作带来的风险。
- The user only needs to input the lifting load, the initial and final working radii, lifting height, the optimal working conditions can be automatically recommended. The search is quick and convenient, which can reduce the risk of human misoperation.



故障自诊断
Fault self-diagnosis system



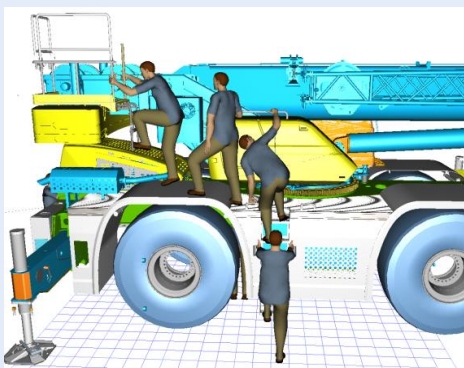
故障自诊断 Fault self-diagnosis system

- 285个控制节点，自动检测、自动诊断，并在显示器上实时显示，故障诊断率达到76%。
- There are 285 control nodes; automatic inspection and automatic diagnosis can be shown in real-time on the display. The fault diagnosis rate can reach 76%.
- 触摸屏一键查询，方便快捷。
- One key searching on the touch screen with quick and convenient operation.



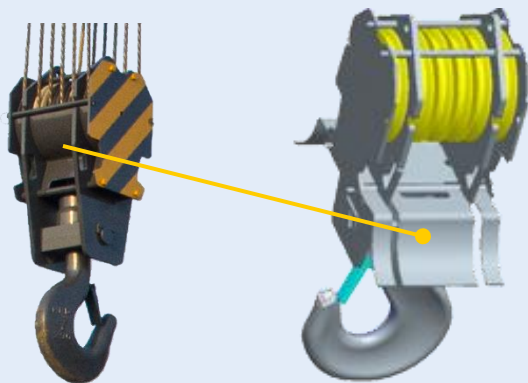
司机室 Driver's cab

- 1.1m宽体司机室，层次分明的流线型仪表台，功能分区布置的触电式按键，人机工程设计的操纵件，驾乘舒适。
- Wide cab of 1.1 m, well arranged stream-lined instrument panel, touch buttons with different functional divisions, ergonomically arranged controls with comfortable driving.
- 角度可调的10.4寸真彩色触摸屏，界面友好，信息丰富，一目了然。
- 10.4 inch true color touch screen display, friendly interface; abundant information is clear at a glance.
- 冷暖空调、12/24V电源接口、收音机、茶杯座、双层储物盒、可调式出风口等完善的配置，使用方便。
- Heater and air conditioner, 12/24V power source, radio, cup holder, double-layer glove compartment, adjustable air outlet, etc. are easy to use.



外观造型与人性化设计 Appearance and ergonomic design

- 全新人机设计把手和扶梯，精良考究工艺制造，攀爬方便可靠。
- Ergonomically designed hand holds and hand rails, made by fine manufacture process, convenient and reliable for climbing.



- 新型穿绳模式，快速拆卸结构，不拆索具，直接穿绳。
- New structure for rope-reeving, no need to disassemble rope socket.

润滑点集中布置
Centrally arranged
lubricating points

测压口集中布置
Centrally arranged pressure
test ports

变速箱机油加注口
Transmission oil filling port



地址：江苏省徐州市经济技术开发区高新路68号

Add：No. 68, Gaoxin Road, Economic and Technological
Development Zone, Xuzhou, Jiangsu, China

电话(Tel)：+86-516-83462242/83462350

质量监督电话(Quality Inquiry Tel)：+86-516-87888268

备件电话(Spare Parts Tel)：+86-516-83461542

邮编(Post Code)：221004

网址(Web)：www.xcmg.com/qizhongji

服务热线 Service Tel

400-110-9999

400-001-5678



本印刷品不属于合同。出于产品不断改进的需要，我们保留对产品型号、参数、配置进行变更的权利，恕不另行通知。图片仅供参考，具体产品以实物为准。图片中产品可能并非标准配置，部分部件可能需要另行购置。办理牌照和上路行驶需遵守当地法规。

This print does not belong to the contract. We reserve the right to modify the design (such as product model, parameters and configuration) without notice for improvement. The pictures are just for reference. The product in the picture may not be standard configuration. Some parts need to be purchased separately. Conform to the local laws for license application and road traveling.

XCMG—XCR55L5_E